



# WORK ZONE SAFETY

Drive carefully for your safety and the safety of highway workers.

Be prepared for slow or stopped traffic as you approach a work zone, and follow these safety rules:

Follow PennDOT and 511PA for the most updated information as traffic conditions and patterns change.



- laurelvalleyproject.com
- 511PA.com
- 511PA Mobile App
- @511PAPittsburgh
- @PittsburghPennDOT
- Pennsylvania Department of Transportation

**1 Plan Your Trip**

You may avoid delays if you choose an alternate route around the workzone.

**2 Obey Flaggers**

Flaggers authority overrides conventional control devices.

**3 Double Your Following Distance**

The most common crash type in workzones is the rear-end collision.

**4 Proceed Cautiously**

Keep moving as you drive through the workzone; do not slow or stop to watch roadwork.

## Stay in Touch with the Project Team

**Mark Kmetz, P.E.**  
PennDOT Construction Manager  
724.439.7253 | makmetz@pa.gov

**Jeffrey R. Miller**  
PennDOT Inspector In Charge  
724.686.3248 | jeffemille@pa.gov

**Melissa Maczko**  
PennDOT Press Officer  
724.439.7135 | mmaczko@pa.gov

**Project Field Office**  
5927 Route 981, Suite 8, Latrobe, PA 15650  
724.686.3248



McCormick Taylor, Inc.  
Attn: Laurel Valley Transportation Project  
1000 Omega Dr., Ste. 1550  
Pittsburgh, PA 15205

# 2026 CONSTRUCTION UPDATE ROUTE 981, SECTION Y10



## What to Expect in 2026

Construction of Section Y10 will continue in 2026 as part of the Laurel Valley Transportation Improvement Project (LVTIP), focusing on preparing the corridor for long-term improvements. Work will include utility relocations, temporary roadway realignments, and other early-stage activities necessary to maintain traffic flow and access to homes and businesses.

Specific 2026 construction activity will include:

- Continued utility relocations throughout the corridor
- Temporary realignment of Route 2023 near Green Street to prepare for a new roundabout
- Temporary roadway work within the Airport Industrial Park area to maintain access for airpark business during construction



### Project Schedule

- Contractor Selected: **October 9, 2025**
- Notice to Proceed: **November 24, 2025**
- Estimated Open to Traffic: **Fall 2029** (\*Subject to Change)



Bell Memorial Church Road/Green Street Roundabout

### Section Y10 Roundabouts

Three roundabouts are planned as part of Section Y10 to improve safety and traffic flow, located at:

- Route 2023 (Bell Memorial Church Road/Green Street)
- Route 130 and Route 2023 (Hill Churches Road/Bell Memorial Church Road)
- Route 981 and the relocated Airport Road

By reducing conflict points and lowering speeds, roundabouts decrease crash severity and enhance overall roadway safety. Compared to similar signalized intersections, roundabouts can accommodate up to 30% more vehicles during peak periods by keeping traffic moving. Drivers yield upon entry, reducing stop-and-go delays and improving corridor efficiency.

**Project Overview:** Section Y10 will improve approximately 2.5 miles of Route 981, from Bingham Road in Mount Pleasant Township to Airport Road in Unity Township.

Improvements include widening the roadway to provide 12-foot lanes with 8-foot shoulders, improving curves and grades, and upgrading drainage and roadside features to meet current standards. These upgrades are designed to enhance safety, improve traffic flow, and support long-term mobility.

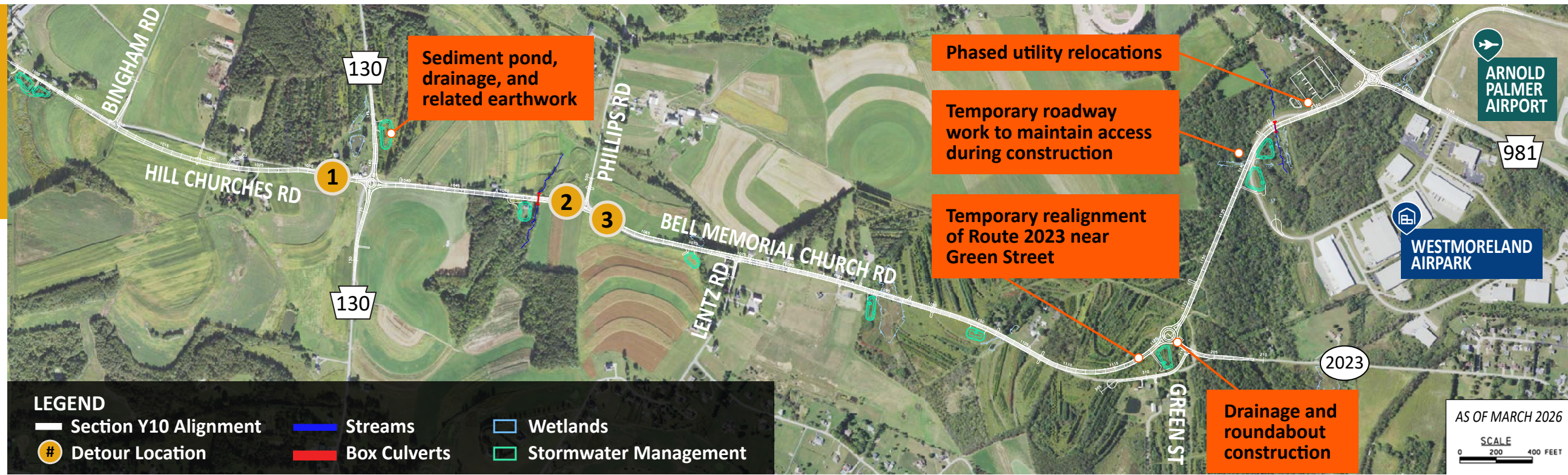
# 2026 ANTICIPATED CONSTRUCTION ACTIVITIES

Dates and detours are subject to change due to weather and construction.

## ACTIVITIES

### JANUARY - SPRING

- Corridor-wide clearing and installation of erosion and sedimentation controls
- Overhead utility relocations (electric and communications) on Bingham Road, Route 130, Green Street, Hill Churches Road, and Bell Memorial Church Road



**LEGEND**

Section Y10 Alignment	Streams	Wetlands
Detour Location	Box Culverts	Stormwater Management

## ACTIVITIES

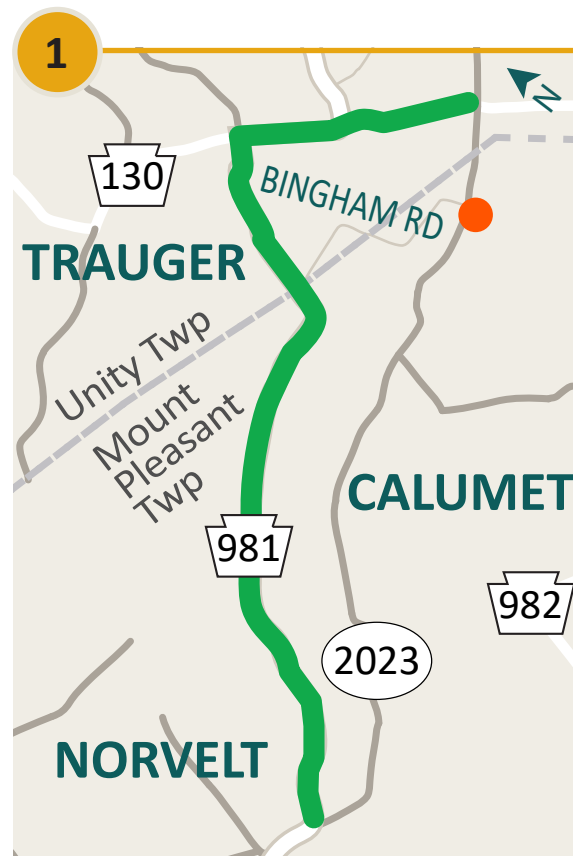
### SPRING - SUMMER

- Sedimentation pond, drainage, and related earthwork on Hill Churches Road (Bingham Road to Route 130)
- Continued utility relocations (overhead, gas, and sewer) on Hill Churches Road, Route 130, Bell Memorial Church Road, and Bay Hill Drive
- Offline roadway construction south of Route 130 and near Green Street roundabout

## ACTIVITIES

### FALL - WINTER

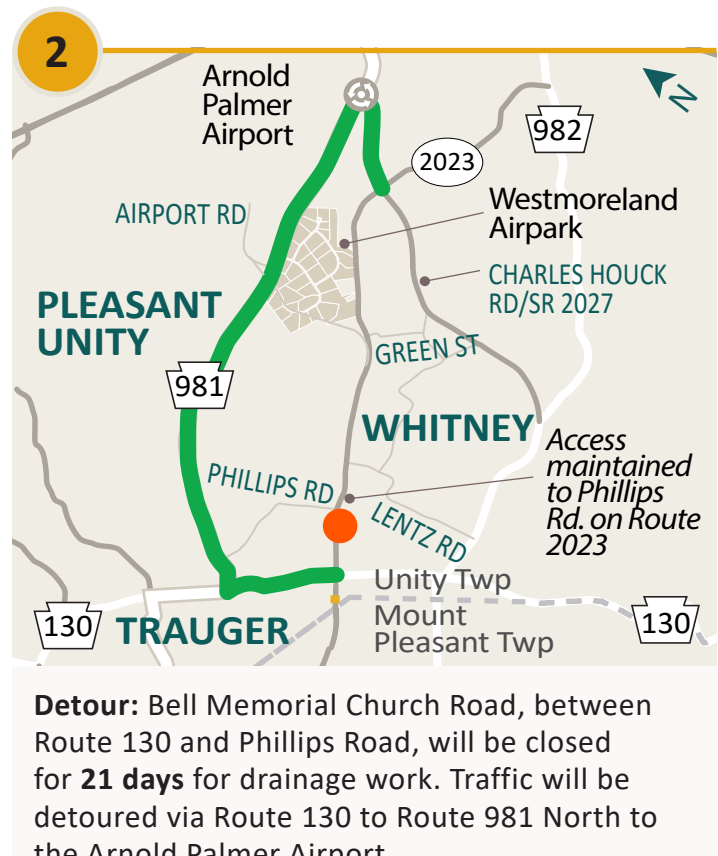
- Continued offline roadway reconstruction on Hill Churches Road
- Route 130 roundabout tie-in work
- Drainage and roundabout tie-in work near Green Street on Bell Memorial Church Road
- Continued overhead utility relocations on Hill Churches Road and Bay Hill Drive



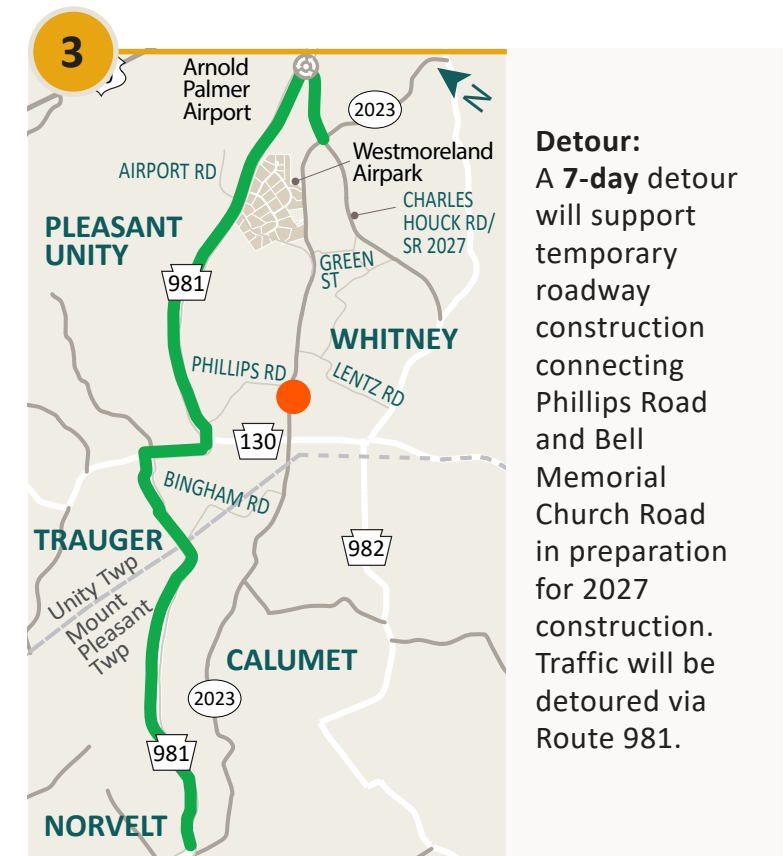
**Detour:** Hill Churches Road, just south of Route 130, will be closed for **50 days** for Route 130 tie-in work. Traffic will be detoured to Route 981.

**DETOUR MAP LEGEND:**

- Work Area
- Detour Route
- Existing Roadway
- Existing Roundabout



**Detour:** Bell Memorial Church Road, between Route 130 and Phillips Road, will be closed for **21 days** for drainage work. Traffic will be detoured via Route 130 to Route 981 North to the Arnold Palmer Airport.



**Detour:** A **7-day** detour will support temporary roadway construction connecting Phillips Road and Bell Memorial Church Road in preparation for 2027 construction. Traffic will be detoured via Route 981.